



Wellfield Emergency Generators

The Wellfield Emergency Generators are a critical component of Calleguas Municipal Water District's (Calleguas') Las Posas Basin Aquifer Storage and Recovery (ASR) Project. Much of the ASR Project has already been constructed, including 18 injection/extraction wells and related facilities located at two wellfields west of Moorpark, more than 6 miles of pipeline up to 72 inches in diameter, and Grandsen Pump Station, which enables Calleguas to deliver water from the wellfield to its customers.

In the event of an interruption of Calleguas' water supply from Metropolitan Water District of Southern California, the ASR Project will provide an important local source to enable Calleguas to meet water demands. Due to the critical nature of the ASR Project, it is essential that the facilities

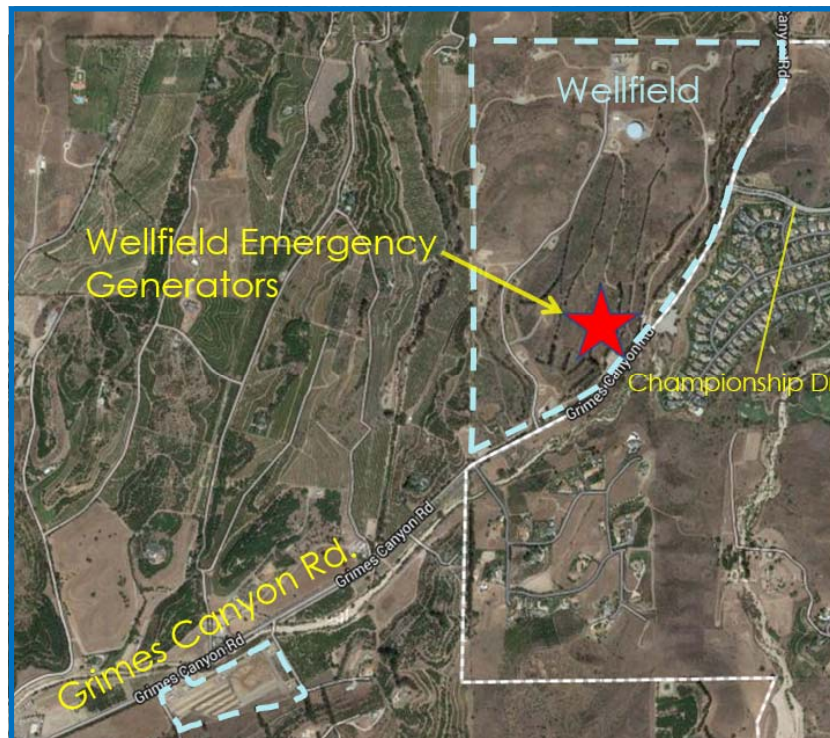
can operate under emergency conditions, including a utility power outage.

The Wellfield Emergency Generators will provide five diesel backup generators and related equipment housed in a building, a fuel storage area, a new Southern California Edison equipment yard for new electrical services to the wellfield, and other improvements to ensure that all wellfield facilities are operational during a utility power outage.


Additional Project Information

For more information and project updates, please visit our website at www.calleguas.com

Thank you in advance for your patience and cooperation as we complete this critical water reliability project.



More information on Calleguas and its programs is available at www.calleguas.com

2100 Olsen Road, Thousand Oaks, California, 91360
805-579-7128  info@calleguas.com